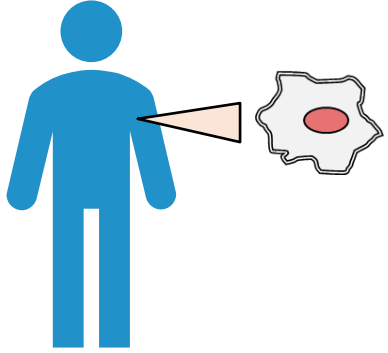


Previous Research

Standpoint

We are built on healthy cells.



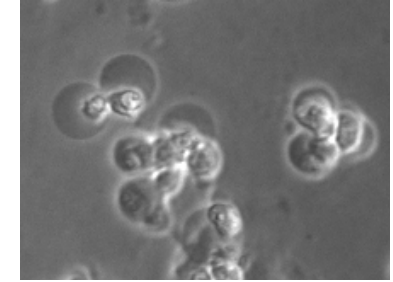
Topic 1: the role of amino acid transporters in cancer pathology



Tumor shrinkage in cystine/glutamate transporter (xCT) gene-KO murine melanoma Sato et al. *Int. J. Cancer* (2020)

Topic 2: ferroptosis

- A novel form of cell death
- Potential therapeutic target for neurodegenerative diseases, cancer, etc.



Upcoming Research

Investigation of bioactivity of *sake* and *sake lees*



sake



sake lees

Cellular protective effects
development of products for health and longevity

Tumoricidal effects
seeds for anticancer drug development



Bring beneficial effects of *sake* brewing products to people regardless of drinking habits

Accelerate research and social implementation by international networks, education and information transmission

